



CABLE 087 RF: RF CABLE ASSEMBLY, I-PEX MHF I PLUG + SMA JACK S/T PCB MOUNT CABLE TYPE + MULTIPLE CABLE SIZES

SPECIFICATIONS:

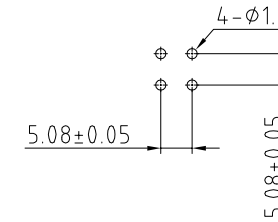
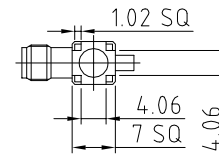
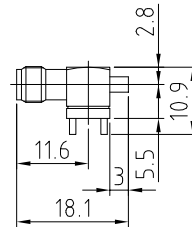
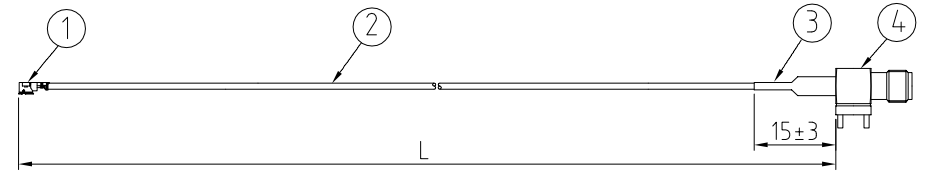
1. I-PEX MHF I PLUG (SEE CHART FOR P/N)
2. MIT COAXIAL CABLE (SEE CHART FOR DETAIL)
3. HEATSHRINK, COLOR: BLACK
4. SMA JACK S/T PCB MOUNT CABLE TYPE (SEE CHART FOR P/N)

NOTES:

1. THE ORIENTATION OF CONNECTORS ON DRAWING IS FOR REFERENCE ONLY, IF THE ORDER IS LEFT BLANK THE CONNECTOR WILL NOT HAVE FIXED ORIENTATION.
2. FIXED ORIENTATION IS SUGGESTED FOR CABLE LENGTH 25MM TO 100MM. PLEASE SPECIFY THE FIXED ORIENTATIONS FROM THE ORDER CODE (F1, F2, ETC)
3. CONTACT GRAD CONN IF THE ORIENTATION YOU REQUIRE IS NOT SHOWN.
4. WORKING FREQUENCY RANGE: DC-6GHz

USAGE PRECAUTIONS: CABLES USING 'MICRO' COAX ARE DELICATE:

- (i) HANDLE WITH CARE.
- (ii) DO NOT TWIST; APPLY EXCESSIVE FORCES OR SHARP BENDS TO THE CABLE. DO NOT FORCEFULLY DEFORM WIRES.
- (iii) CONSULT CONNECTOR MANUFACTURER'S DATASHEETS FOR DETAILED NOTES ON HANDLING INSTRUCTIONS.

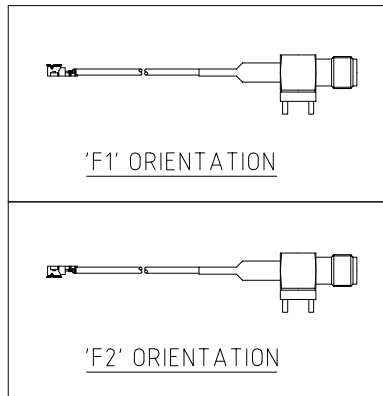


SMA JACK DETAIL DIMENSION

RECOMMENDED PC BOARD LAYOUT

CHART OF CABLE AND CONNECTOR P/N

CABLE ϕ & COLOR	I-PEX P/N	SMA P/N
ϕ 1.13, GRAY	20278-112R-13	C02BI31113015B
ϕ 1.32, GRAY	20278-112R-32	C02BI31132015B
ϕ 1.37, BLACK	20351-112R-37	C02BI31137015B
RG178, BROWN	20278-112R-18	C02BI31178015B
ϕ 0.81, GRAY	20278-112R-08	C02BI31081015B



HOW TO ORDER

CABLE 087 RF - X X X - X X - X

"L" LENGTH IN MM
 eg: 100MM = 0100
 (MIN. 025-MAX.400)
 STANDARD = 100, 150, 200)
 Tolerance: -50mm : $\pm 2\text{mm}</math>.
 51-200mm: $\pm 5\text{mm}</math>.
 201-400mm: $\pm 7\text{mm}</math>.$$$

CABLE SIZE OPTIONS:

- 0 = ϕ 1.13MM CABLE
- 2 = ϕ 1.32MM CABLE
- 3 = ϕ 1.37MM CABLE
- 4 = RG178 CABLE
- 5 = ϕ 0.81MM CABLE

BLANK = DOES NOT HAVE A FIXED ORIENTATION
 F1 = I-PEX CONNECTION UP (L=25-220MM)
 F2 = I-PEX CONNECTION DOWN (L=25-220MM)
 (SEE NOTES 1, 2, 3 AND DIAGRAMS FOR MORE INFORMATION)

10	27/07/09 - CRE RELEASE
11	11/03/09 - NYW
12	15/02/09 - NYW
13	22/03/10 - NYW
14	17/05/10 - NYW
15	08/09/10 - NYW
16	18/09/13 - NYW
17	15/03/19 - NYW
18	28/07/21 - NYW

19	ADD CABLE SIZE 3 (MHF II)
20	REMOVE CABLE SIZE 1 (MHF 2)
21	ADD HEATSHRINK LURE LENGTH
22	AMEND IPEX P/N FOR 40 81 CABLE
23	AMEND IPEX RG178 P/N
24	AMEND IPEX RG178 P/N
25	AMEND IPEX RG178 P/N
26	AMEND IPEX RG178 P/N
27	AMEND IPEX RG178 P/N
28	AMEND IPEX RG178 P/N
29	AMEND IPEX RG178 P/N
30	AMEND IPEX RG178 P/N
31	AMEND IPEX RG178 P/N
32	AMEND IPEX RG178 P/N
33	AMEND IPEX RG178 P/N
34	AMEND IPEX RG178 P/N
35	AMEND IPEX RG178 P/N
36	AMEND IPEX RG178 P/N
37	AMEND IPEX RG178 P/N
38	AMEND IPEX RG178 P/N
39	AMEND IPEX RG178 P/N
40	AMEND IPEX RG178 P/N
41	AMEND IPEX RG178 P/N
42	AMEND IPEX RG178 P/N
43	AMEND IPEX RG178 P/N
44	AMEND IPEX RG178 P/N
45	AMEND IPEX RG178 P/N
46	AMEND IPEX RG178 P/N
47	AMEND IPEX RG178 P/N
48	AMEND IPEX RG178 P/N
49	AMEND IPEX RG178 P/N
50	AMEND IPEX RG178 P/N

Scale:	NTS	THIRD ANGLE	Unstated X .XX .XXX ANGLES	Tolerances: N/A N/A N/A N/A	Material SEE NOTE
Drawn:	CHC				
App'd:	XXX	Title	CABLE ASSEMBLY		NOT TO SCALE
Date:	28 JAN. '21	Revision:	18		Unit: mm

www.gradconn.com

THIS DRAWING IS CONFIDENTIAL AND MUST NOT BE COPIED OR DISCLOSED WITHOUT WRITTEN CONSENT

Type:	Cable 087 RF
	CABLE 087 RF
Drawing Number:	Sheet 1 of 1
Drawing	E and O E